

Moor Meadows Guide Number 2

Meadow Insects



Bush-crickets, Grasshoppers, Beetles, Bugs and Flies

Meadows and other flower-rich verges and grasslands provide habitat for a wide variety of insects. This guide shows some of the grasshoppers, beetles, true bugs and flies found in the grasslands around Dartmoor. Details of their life histories is given, including how they spend the autumn and winter, to inform beneficial management of their habitats.



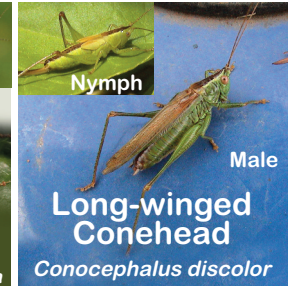
Dark Bush-cricket
Pholidoptera griseoaptera
Nymphs emerge in April, full-grown by July and live until October. Males make a short chirp. Eggs are laid in stems of brambles and other woody plants.



Great Green Bush-cricket
Tettigonia viridissima
Nymphs emerge in April, full-grown by July and live until October. Males make a loud rattling call. Eggs are laid in the ground and take 2 years to hatch.



Speckled Bush-cricket
Leptophaea punctatissima
Nymphs emerge in April and are full-grown by July and live until October. Males call inaudible except by using a bat detector. Eggs are laid in stems.



Long-winged Conehead
Conocephalus discolor
Nymphs emerge in May, full-grown by August and live until October. Males make a quiet crackling call. Eggs are laid in stems.



Meadow Grasshopper
Chorthippus parallelus
Nymphs in April, full-grown by June, live until October. Males make a chirping call. Eggs are laid in the ground. Colour very variable in both species. www.orthoptera.org.uk for more information.



Field Grasshopper
Chorthippus brunneus
Life cycle as Meadow Grasshopper. Males make short buzz call. Told from Meadow Grasshopper by X mark on thorax.



Common Green Grasshopper
Omocestus viridulus
Nymphs emerge in April full-grown by May and live until October. Males make a ticking call. Eggs are laid in the ground. Colour always green and brown - no red.



Groundhoppers
Tetrix undulata & subulata
Small relatives of grasshoppers. Overwinter as adults. On bare ground and muddy patches by water.



Common Earwig
Forficula auricularia
Female guards eggs underground in winter. Nymphs hatch in spring and are full grown by mid-summer.



Green Shieldbug
Palomena prasina
A common true bug (their mouthparts are like straws not jaws as beetles have). Changes to brown colour over winter.



Dock Bug
Coreus marginatus
Common on docks. Often found sunning in autumn before overwintering in low vegetation at ground level.



Sloe Bug
Dolycoris baccarum
A common true bug in hedges and on low vegetation. Overwinters in low vegetation at ground level.



Common Froghopper
Philaenus spumaris
The nymphs suck sap from plants and construct a 'bubble house'. The adults are not so easily seen.



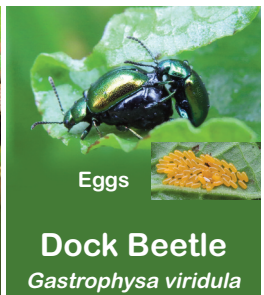
Red and Black Treehopper
Cercopis vulnerata
A distinctive bug found in hedges and meadows in May and June. www.britishbugs.org.uk is the best source of information on the UK's true bugs.



Green Leafhopper
Cicadella viridis
A small bug that is common in damp meadows.



Mirid Bug
Leptopterna dolabrata
One of many similar looking true bugs.



Dock Beetle
Gastrophysa viridula
A common leaf beetle found on docks. The yellow egg batches are laid on the underside of leaves. Overwinters as an adult.



Bloody-nose Beetle
Timarcha tenebricosa
Common leaf beetle that feeds on bedstraws. The larvae are found in May and June. The adults overwinter in low vegetation. www.coleoptera.org.uk for more information.



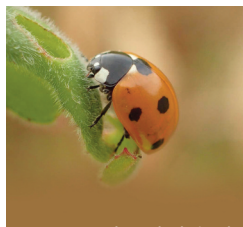
Mint Leaf Beetle
Chrysolina herbacea
Beautiful leaf beetle found on water mint in damp meadows. Overwinters in leaf litter.



Fleabane Tortoise Beetle
Cassida murraea
A 'bug like' beetle found on fleabane. Green in autumn then turns red to overwinter in leaf litter.

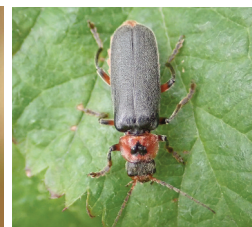


Click Beetle
Agrypnus murinus
Several brown click beetles occur in Dartmoor meadows. Larvae known as 'wire-worms' live in soil and eat roots.



7-spot Ladybird
Coccinella 7-punctata

The familiar ladybird found in a variety of habitats including meadows from March to October.



Soldier Beetle
Cantharis rustica

A predator of other insects. This distinctive beetle can be seen in May and June.



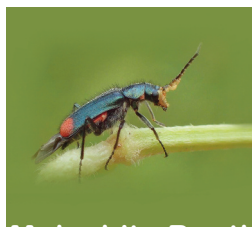
Black-tipped Soldier Beetle
Rhagonycha fulva

A common beetle often seen on hogweed and thistle flowers in July and August.



Swollen-thighed Beetle
Oedemera nobilis

Common in meadows from May to July. Only the males have swollen 'thighs'.



Malachite Beetle
Malachius bipustulatus

In meadows and surrounding trees from April to August. A predator of smaller insects.



Garden Chafer
Phyllopertha horticola

Often abundant in grasslands during May and June. The larva feeds underground on roots.



Dor Beetle
Geotrupes spiniger

One of several large dung beetles found on Dartmoor.



Dung Beetles
Aphodius

There are many species of small usually brown dung beetles on Dartmoor.



Sexton Beetle
Nicrophorus vespillo

Distinctive carrion feeding beetles. Fly at night and sometimes attracted to light traps.

Online guide to UK ladybirds:
<http://www.surfbirds.com/ladybird-guide.html>

More information on dung beetles and Sexton Beetles:
www.johnwalters.co.uk/publications/guide-to-britishbeetles.php
www.coleoptera.org.uk/sites/www.coleoptera.org.uk/files/Silphidae%20Key_2019%20version.pdf



Hornet Robberfly
Asilus crabroniformis

A large hornet mimic. Can be seen from August to October. An ambush predator of other insects.



Bee Mimic Hoverfly
Volucella bombylans

A convincing bumblebee mimic. Its larvae live inside social bee and wasp nests.



Dronefly
Eristalis tenax

A very common honeybee mimic. Can be seen all year. Larvae are rat-tailed maggots in water.



Marmalade Hoverfly
Episyrphus balteatus

A common hoverfly. Larvae are aphid predators.



St Mark's Fly
Bibio marci

Common in late April and May. There are several similar species.



Dark-edged Bee-fly
Bombylius major

Spring-flying bee mimic. Its larvae are parasitoids of solitary bee larvae.



Western Bee-fly
Bombylius canescens

Smaller bee-fly that flies from May to August.



A Rove Beetle
Paederus littoralis

A distinctive rove beetle. A predator of smaller insects.



Devil's Coach Horse
Ocyptus olens

A large distinctive rove beetle most often seen in late summer and autumn. A predator of insects including other beetles.



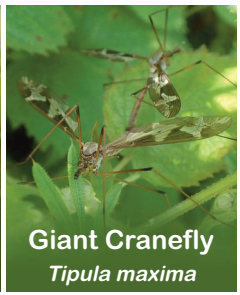
Heineken Flies
Rhingia campestris

Stout hoverflies with long tongues - that reach the parts of flowers other flies can't! The larvae develop in dung.



Yellow Dung Fly
Scathophaga stercoraria

Common on dung. A predator of other insects.



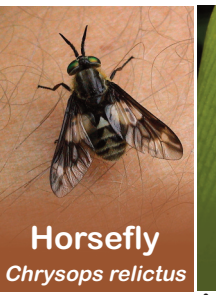
Giant Cranefly
Tipula maxima

A large cranefly with patterned wings. Usually seen in damp meadows in June.



Broad Centurion
Chloromyia formosa

Common in meadows June to August.



Horsefly
Chrysops relictus

An attractive member of this group of blood-sucking flies.



Nursery Web Spider
Pisaura mirabilis

A common spider in meadows. The female carries her egg cocoon in her jaws then constructs a nursery web when eggs hatch.



Wolf Spider
Pardosa

Several species can be seen running on the ground and through vegetation especially in spring.



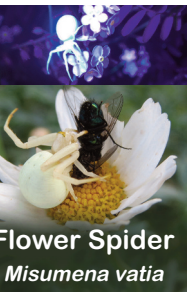
Garden Orb Spider
Araneus diadematus

Familiar large orb spider that is adult in late summer and autumn.



Four-spotted Orb Spider
Araneus quadrimaculatus

A fat-bodied orb spider that is common in rough meadows on Dartmoor in autumn.



Flower Spider
Misumena vatia

Camouflaged on flowers in spring and summer. Easier to see at night with aid of a UV torch!

Search for 'Steven Falk Flickr Collections' for excellent online guides to flies and other insect groups.

www.britishspiders.org.uk

Design John Walters 2021 www.johnwalters.co.uk

